



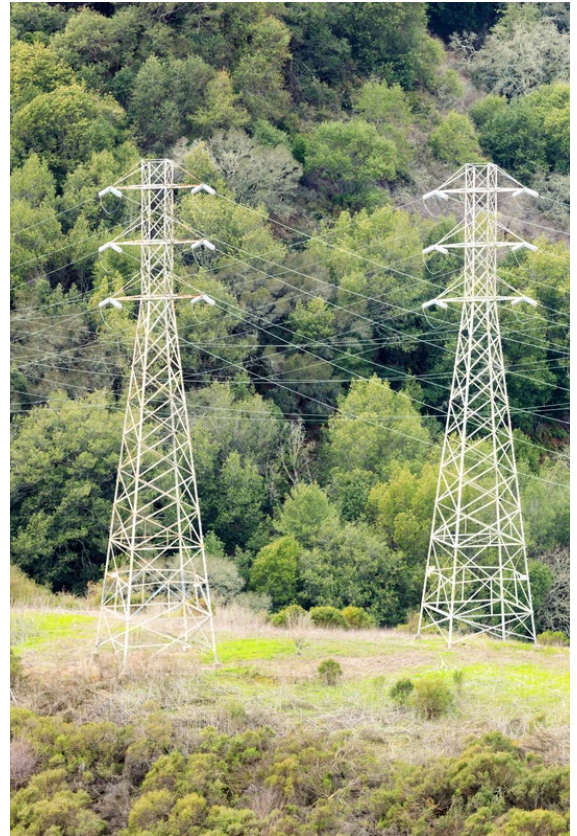
Enhanced Powerline Safety Settings

September 2022

Program Description and Purpose

To help mitigate the risk of ignitions associated with catastrophic wildfires, Pacific Gas and Electric Company (PG&E) has adjusted the sensitivity of its electric equipment to turn off power quickly and automatically if the system detects a problem. PG&E calls this Enhanced Powerline Safety Settings (EPSS). If an object strikes a line, safety equipment detects the change in current and shuts off power within one-tenth of a second.

PG&E's implementation of the program has resulted in frequent outages for communities across its service territory. EPSS outages occur with no notice and can last hours or days. Though PG&E reports that implementation of EPSS has significantly reduced California Public Utilities Commission (CPUC)-reportable wildfire ignitions, this approach has also increased the frequency and duration of unplanned power outages for its customers.



PG&E first implemented a pilot version of its EPSS program in 2021 across 11,500 miles of distribution circuits in High Fire Threat Districts (HFTD). In 2022, PG&E has expanded the scope of its EPSS program to cover all circuits in the HFTD and select HFTD-adjacent areas. PG&E has stated it will expand and refine its EPSS program in 2022 to address reliability impacts and enhance customer outreach and support.

Efforts to reduce customer impacts include targeted vegetation clearing to prevent branch and tree fall-ins, dedicated crews for restoration and response, and increased communication between devices to reduce the size of outages.



Engaging with Public Agencies

Stakeholders and the public can engage with the CPUC and Office of Energy Infrastructure Safety regarding EPSS through multiple venues.

To provide input on the use of EPSS as a wildfire safety mitigation strategy, contact the Office of Energy Infrastructure Safety:

- Wildfire Mitigation Plan Docket: [Contact | Office of Energy Infrastructure Safety \(ca.gov\)](#)
- Wildfire Safety Contact Form: [Wildfire Safety Concerns | Office of Energy Infrastructure Safety \(ca.gov\)](#)
- General Contact Form: [Contact | Office of Energy Infrastructure Safety \(ca.gov\)](#)

To provide input on whether the CPUC should regulate EPSS:

- Add comments to the de-energization docket (Rulemaking 18-12-005) where joint parties have filed a motion for the CPUC to regulate EPSS: [Provide Public Comment](#)
- Participate in the de-energization proceeding more formally: [Methods for Becoming a Party to a Proceeding – Rule 1.4 \(ca.gov\)](#)

Further Information on EPSS, Outages, and Reliability

For further information regarding EPSS, power outages, and reliability, visit the following resources:

PG&E

- [PG&E's Enhanced Powerline Safety Settings](#)
- View current outages: [PGE Emergency Site - Outage Center](#)
- Information on backup power options: [Backup Power](#)
- PG&E's wildfire mitigation efforts: [Community Wildfire Safety Program](#)

CPUC

- [PG&E's Heightened Equipment Sensitivity Wildfire Mitigation Program](#)
- [Power Outage Resources](#)
- [Electric System Reliability Annual Reports](#)