

ENVIRONMENTAL DEMAND RESPONSE

October 2019



WattTime

“Giving people the power to choose cleaner electricity”

Who We Are

- High-tech nonprofit dedicated to accelerating the development & spread of new sustainability techniques
- Built by 200+ volunteers from Google, MIT, Climate Corp, DOE, and more
- Joined forces with Rocky Mountain Institute in 2017

What We Do

- Obsessed with understanding grid emissions at a granular level and building tools to help others use that information to maximize impact and advance goals
- Effectively utilize granular emissions data (5 minute intervals) over 100 U.S. grid regions

 greentechmedia:

Clean
Technica

Chicago Tribune

Forbes

FAST
COMPANY 

theguardian

 ENERGY INSTITUTE AT HAAS

Union of
Concerned
Scientists

 ECHOING
GREEN

MIDAS

Market
Informed

Demand
Automation

Service

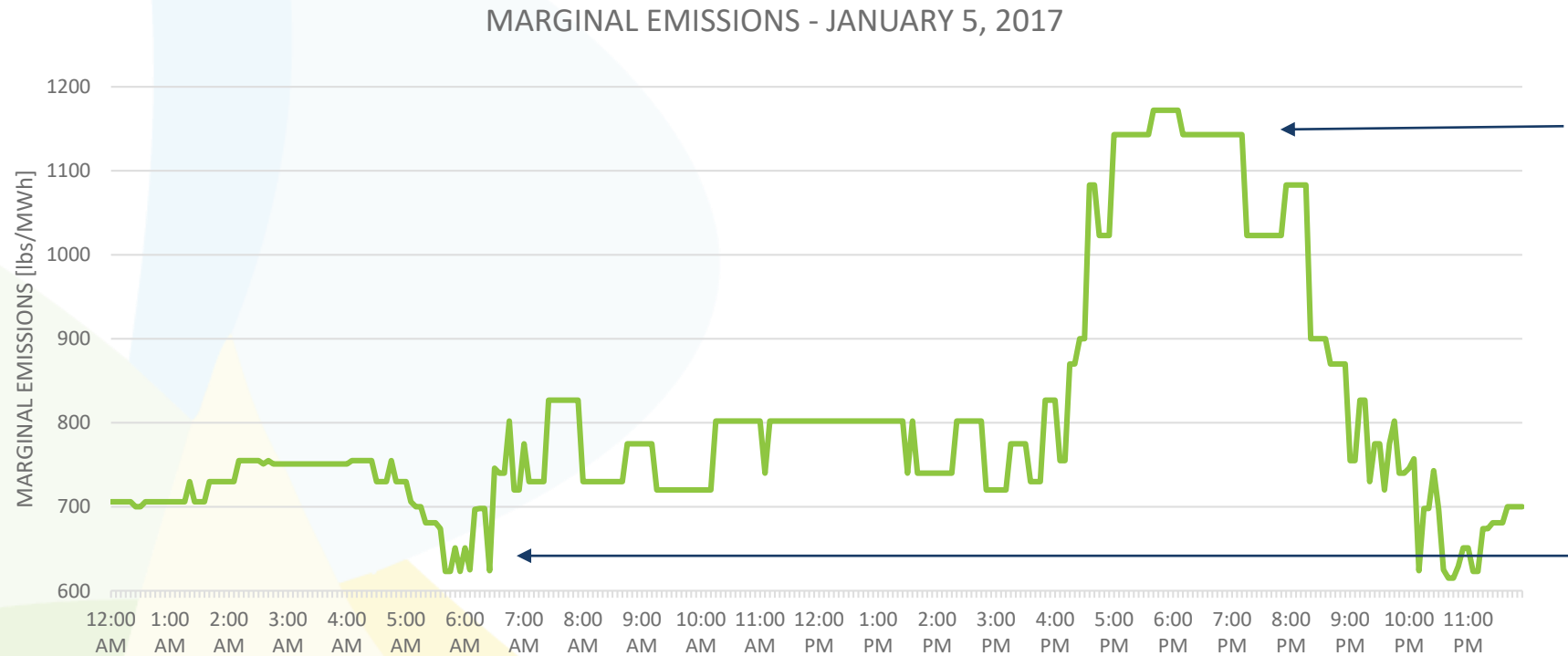


MIDAS

MARKET INFORMED

Grid Emissions Vary By Time

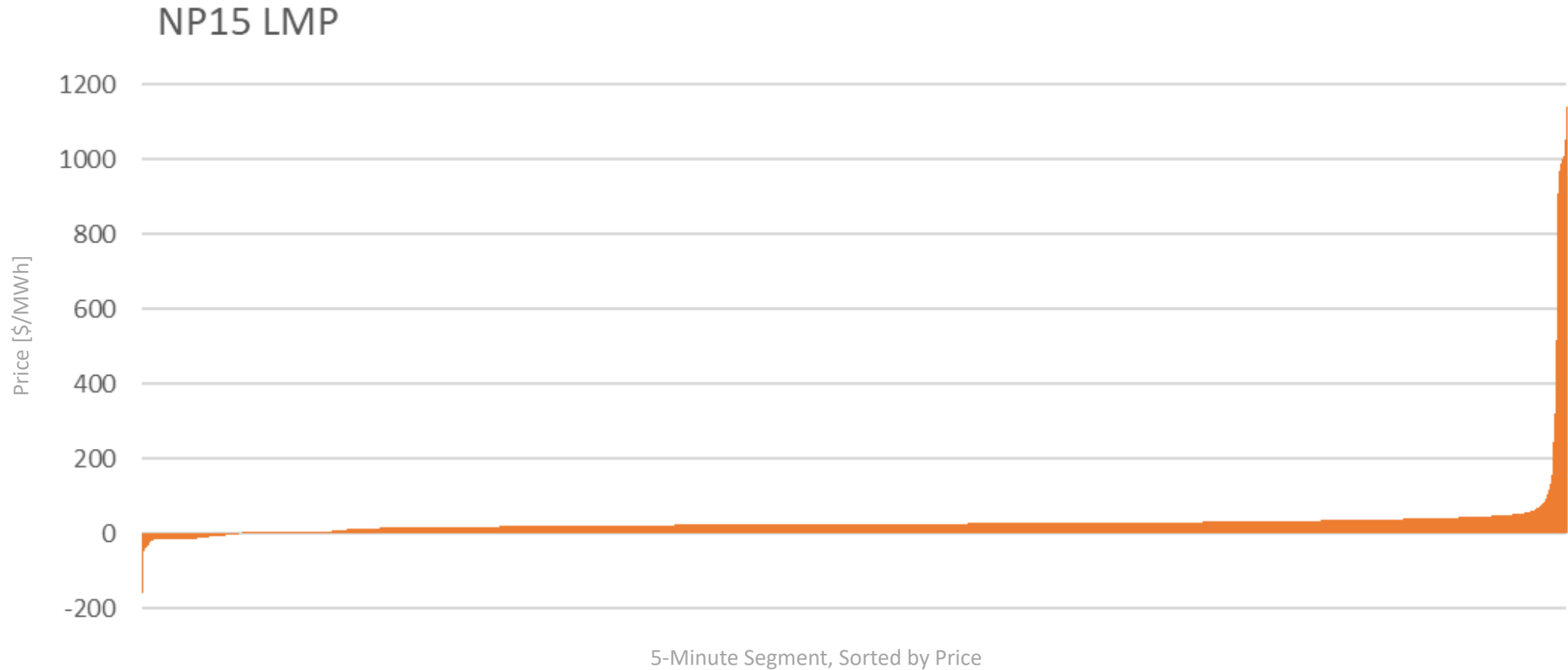
The marginal power plant that reacts when you flip a switch is always changing. Power customers don't know in real time how dirty their power is.



A dirty time on the grid. Using electricity at this time causes more carbon emissions.

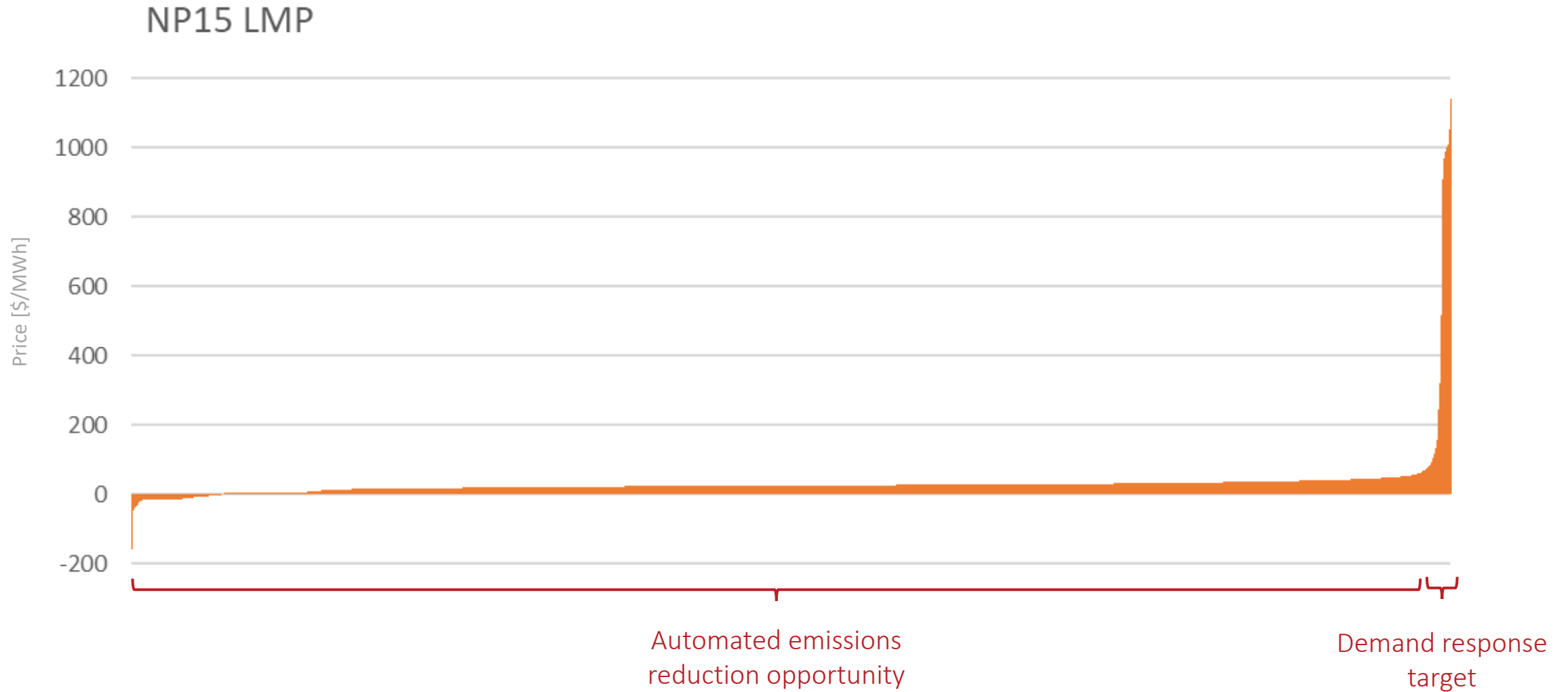
A clean time on the grid. Using electricity at this time causes fewer carbon emissions.

LMP Price Frequency



Price of electricity (In dollars per megawatt-hour, Northern California, 2017)

Combining AER & Demand Response





MIDAS

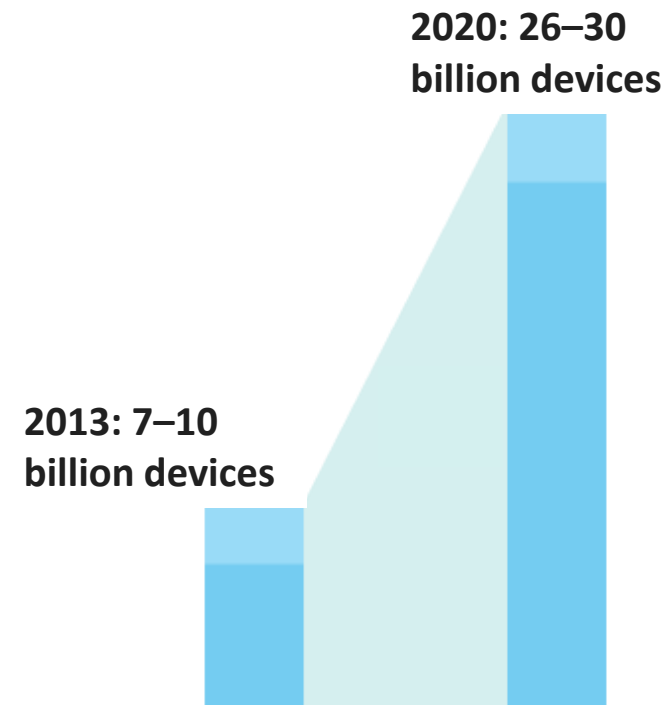
DEMAND AUTOMATION

Customers are increasingly demanding communicating, controllable, and “smart” devices and control systems

Smart devices, appliances, and controls are growing in availability and popularity

- The smart thermostat market is projected to quadruple in size, reaching a \$4.4 billion dollar industry by 2025.
- Large consumer technology companies are now competing for market share in the growing “smart home” space.
- In institutional, commercial, and industrial facilities, business priorities are driving customers to demand connected, intelligent control systems to manage loads.

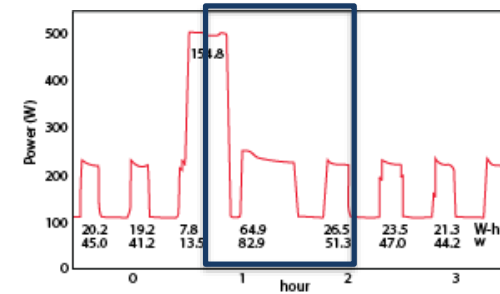
Some 30 billion devices may be connected to the Internet of Things (IoT) by 2020^[2]



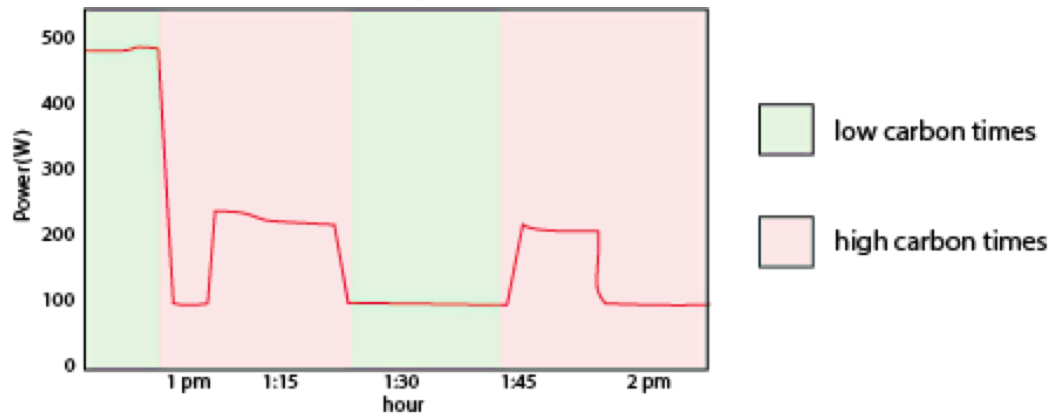
Emissions Reductions through Timing

- Much electricity use is at least partially flexible in time
- E.g. devices with compressor cycles can sync cycles to cleaner moments

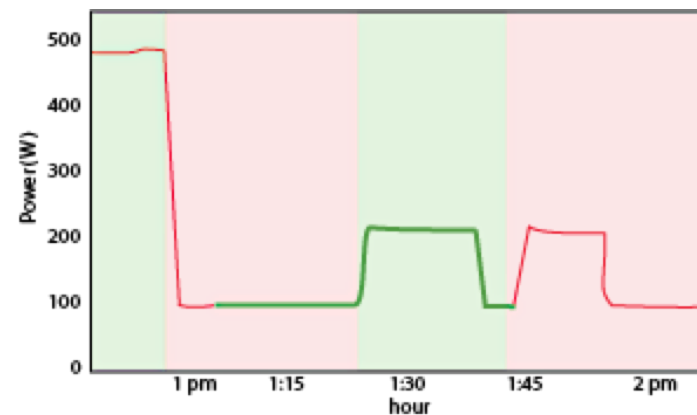
Example: fridge cycles



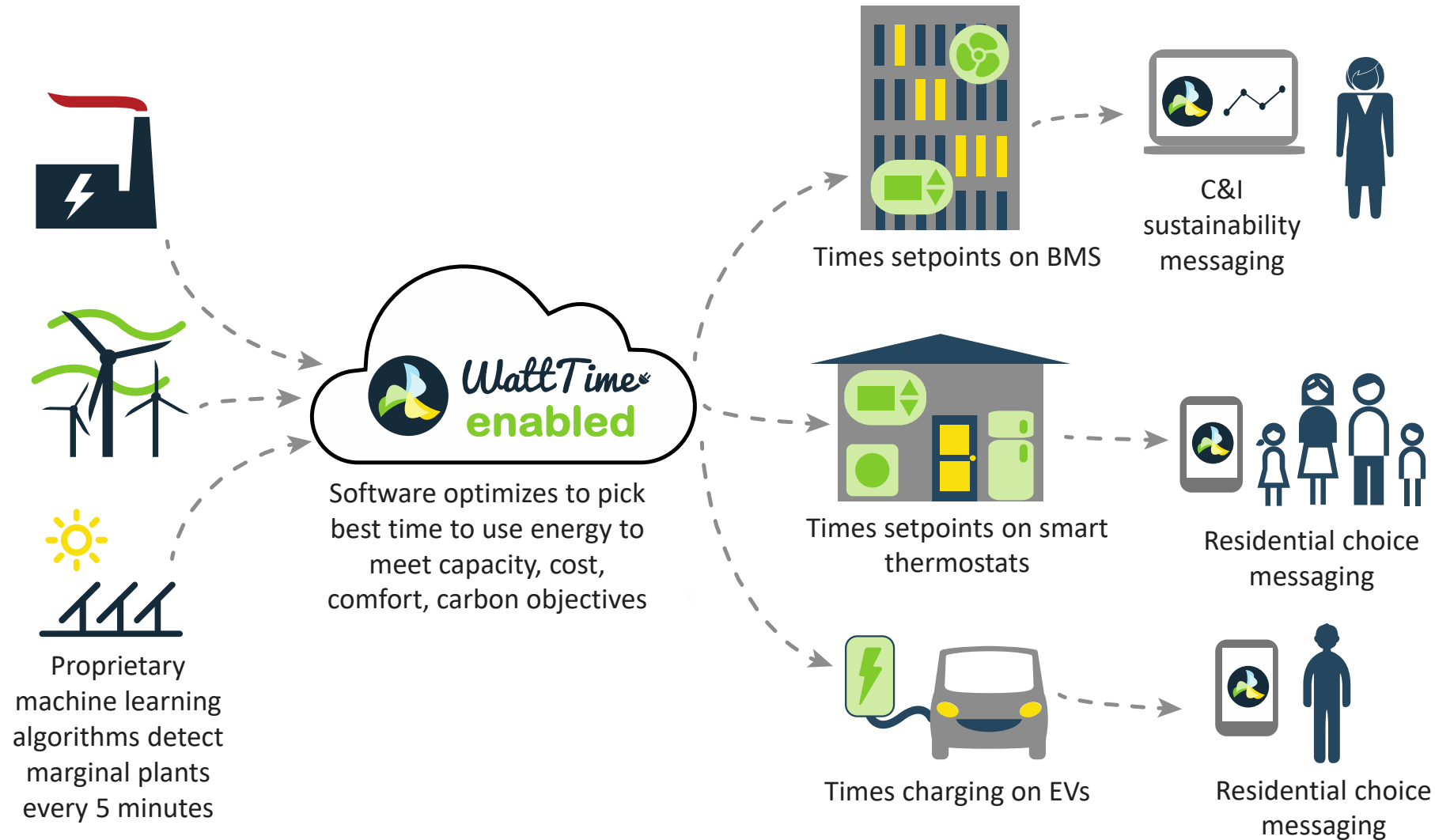
Normal operation



Emissions-optimized

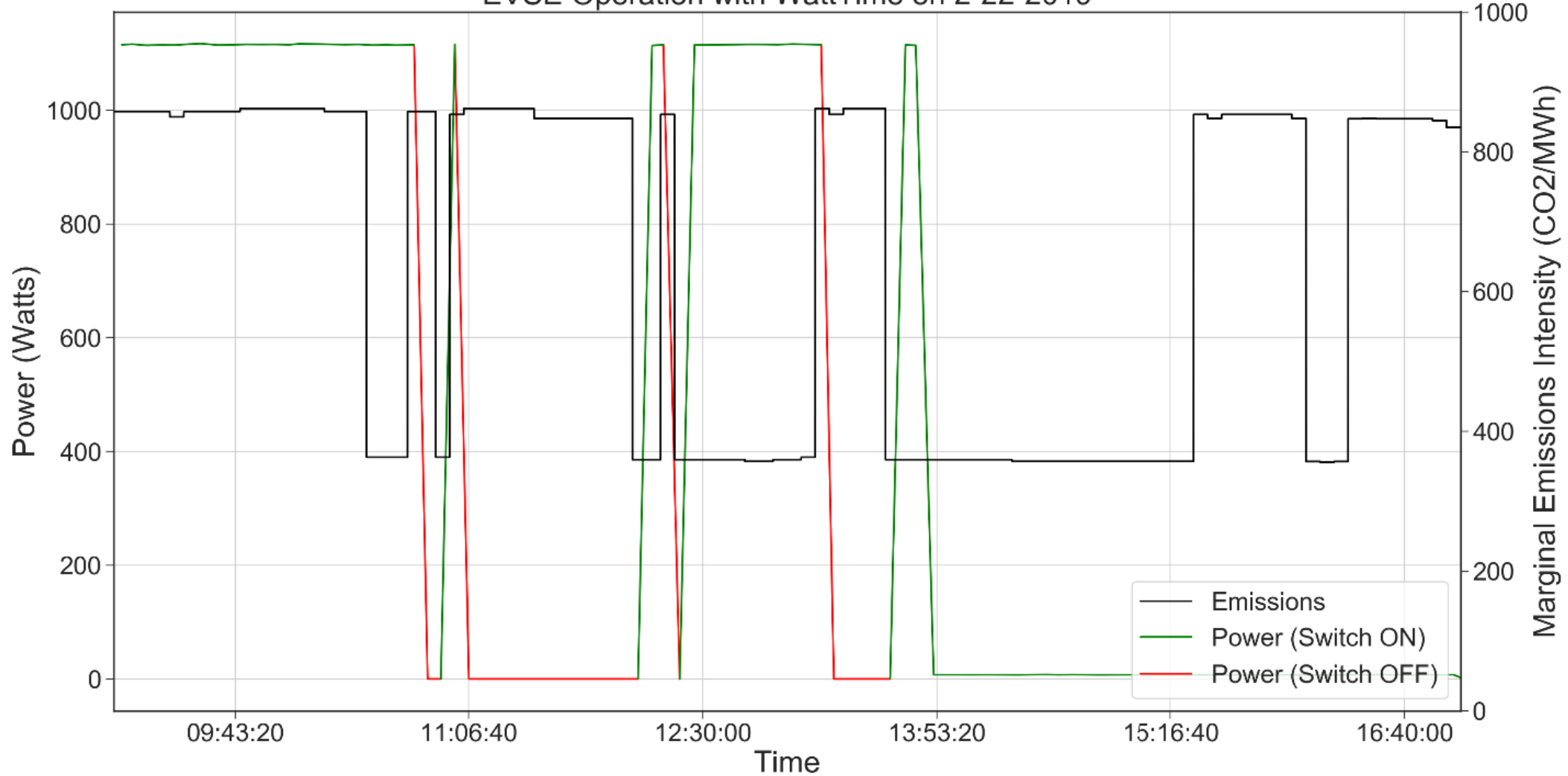


Automated Emissions Reduction Platform



DRET: Automated Emissions Reduction

EVSE Operation with WattTime on 2-22-2019





MIDAS

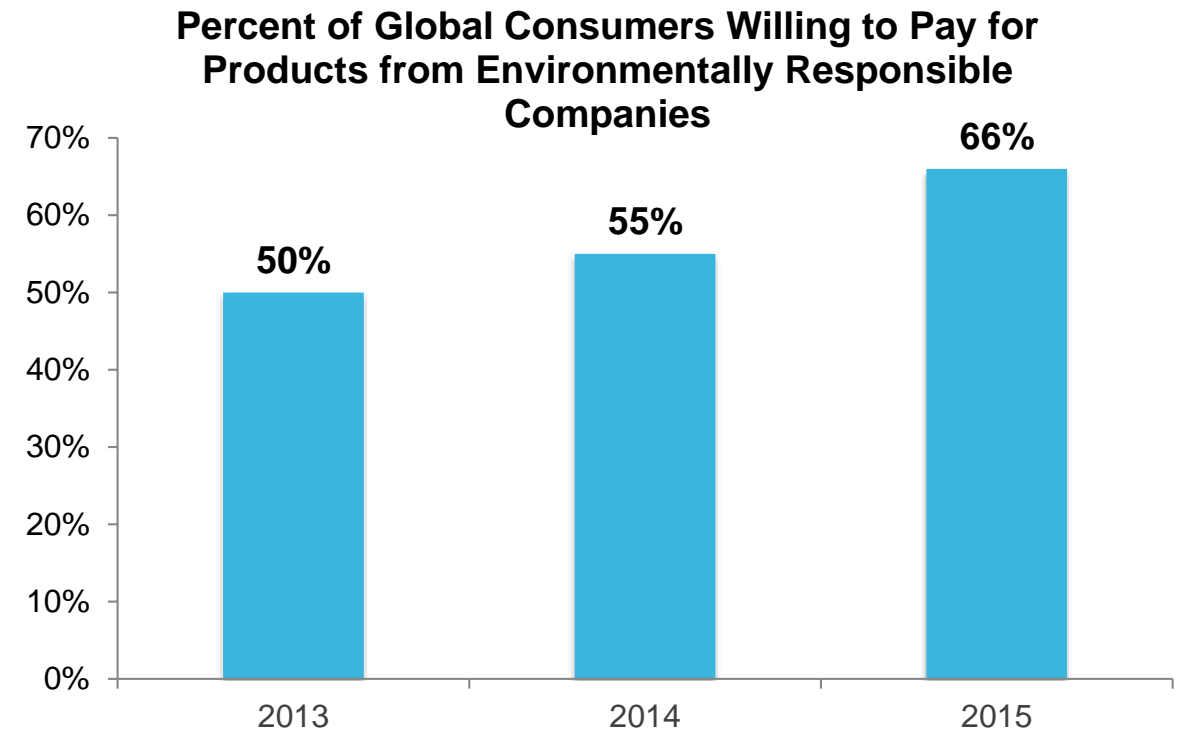
SERVICE

Individual consumers are expecting more environmentally friendly options, and are willing to pay for them

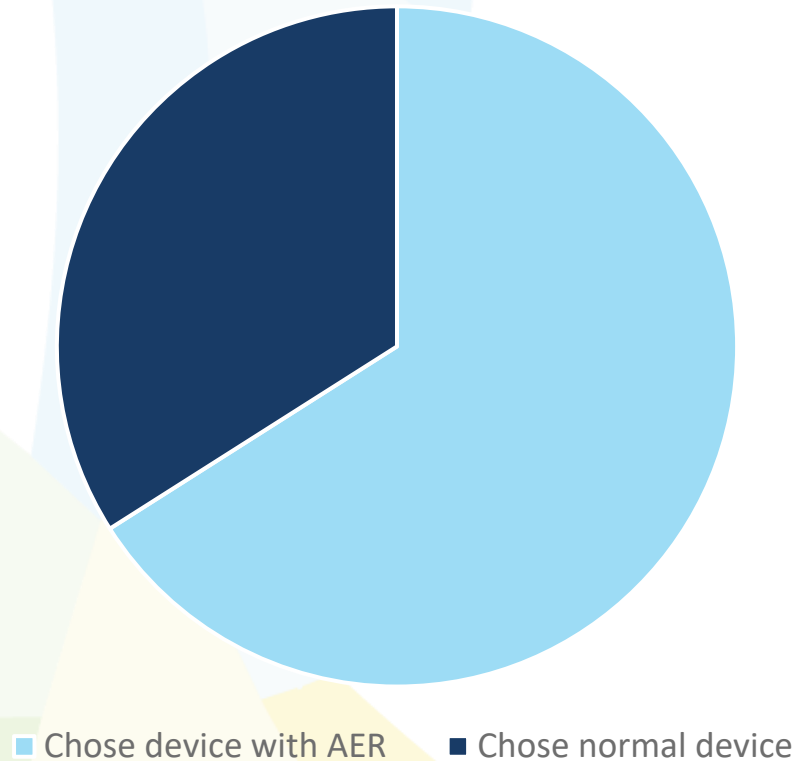
Consumers in America want and expect more sustainable solutions

- A survey of 1,500 customers conducted by SmartEnergy IP found that 32% expect their utility to adopt automation technologies to save energy^[1]
- A 2016 Gallup poll revealed that 73% of Americans want to emphasize alternative energy instead of oil and gas production^[2]

Consumers are increasingly willing to pay for environmentally conscious brands^[3]



Customer preference for AER translated into actual change in buying behavior



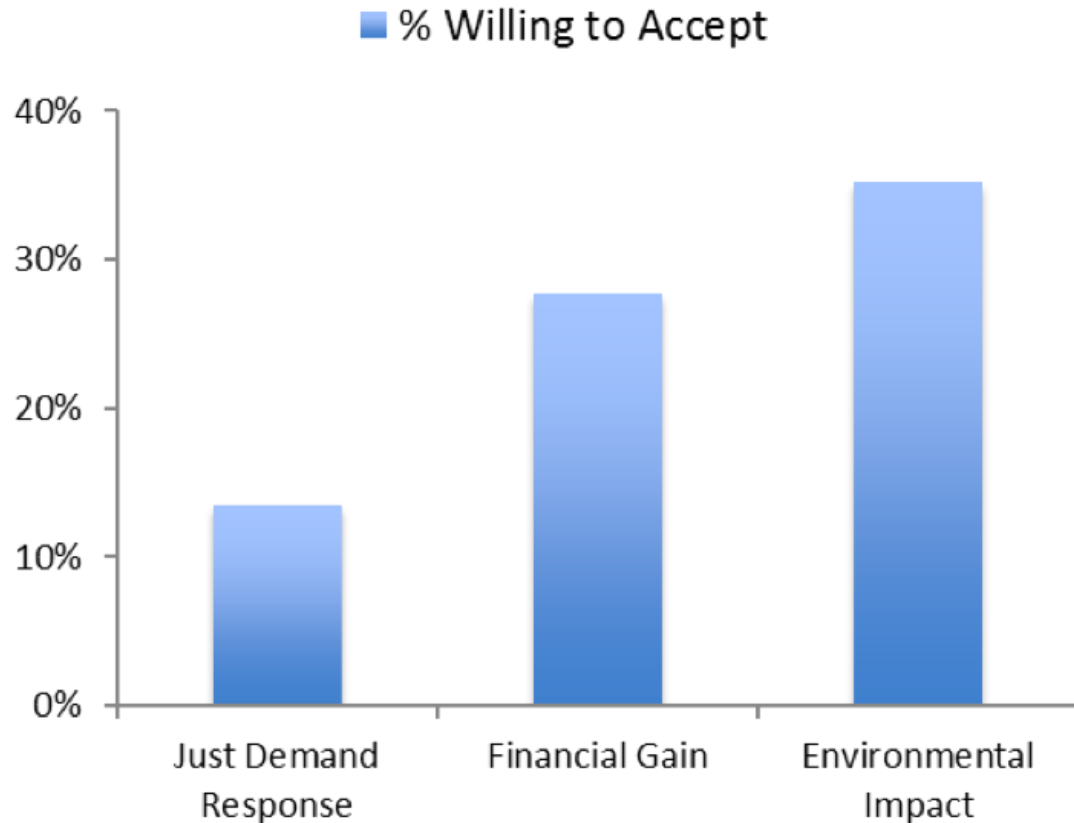
Study (Delta Institute):

- 100 individuals in Chicago offered a free thermostat and asked to choose between two identical devices, one with WattTime's AER feature and one without

Result:

- Yes. 2/3 of customers chose the thermostat with AER.

Demand Response Participation with AER



Study (WattTime):

- 300 randomly selected individuals across 30 U.S. states were asked if they would sign up for a hypothetical ADR program. Unbeknownst to these individuals, they were randomly assigned to different ADR program descriptions: a regular program, one that offered an unusually large financial incentive (\$600/month per thermostat), or one with AER.

Result:

- Adding environmental impact to a DR program (by adding AER to it) increased signups. Contrary to researcher expectations, AER increased signups *even more* than financial gain did.

Existing Products



[Store](#) [Residential](#) [Commercial](#) [Utilities](#) [Partners](#) [News](#)

Contact



Emission-Minimizing EV Charging Feature (software upgrade)

- Synchronizes with grid generation sources
- Enables you to charge your EV when the cleanest energy is available on the grid
- Reduces carbon emissions impact of EV charging

\$50.00
+ FREE shipping

ADD TO CART

- 1 +



Support



HOW EVOLVE WORKS




INPUTS

POWER PRICES

A dark blue rectangular box containing three white icons: a factory with a lightning bolt, a wind turbine, and solar panels.

REAL-TIME DATA

WEATHER

CARBON 

COMMUNITY

An orange rectangular box containing three stacked brown rectangular boxes. The top box contains the word "WEATHER". The middle box contains the word "CARBON" followed by a green leaf icon. The bottom box contains the word "COMMUNITY".

USER SETTINGS

COST

CARBON

COMFORT

EVOLVE AI

MACHINE LEARNING


ANALYTICS


MULTI-VARIABLE ALGORITHM

A large green rectangular box containing several stacked elements. At the top is the text "USER SETTINGS". Below it are three stacked green rectangular boxes containing the words "COST", "CARBON", and "COMFORT". Below these is the text "EVOLVE AI". At the bottom are three stacked orange rectangular boxes containing the words "MACHINE LEARNING", "ANALYTICS", and "MULTI-VARIABLE ALGORITHM".

OUTPUTS

AUTOMATIC LOAD SHIFTING

 IOT DEVICES

 EVOLVE BATTERIES

A purple rectangular box containing the text "AUTOMATIC LOAD SHIFTING" at the top. Below it are two stacked dark purple rectangular boxes. The top box contains a white circle with the number "70" inside, followed by the text "IOT DEVICES". The bottom box contains a white battery icon with a lightning bolt inside, followed by the text "EVOLVE BATTERIES".

MANUAL LOAD SHIFTING

NOTIFICATIONS

USER PROMPTS

A light gray rectangular box containing the text "MANUAL LOAD SHIFTING" at the top. Below it are two stacked gray rectangular boxes. The top box contains the text "NOTIFICATIONS". The bottom box contains the text "USER PROMPTS".

MIDAS Proposal

Overlay emissions reductions and energy choice onto existing DR programs

Provide energy choice for customers

Achieve cost-effective continuous load shifting

Automated, device dependent program

Select market signals [emissions, energy, capacity, distribution, curtailment]

Thank You

Henry Richardson

Environmental Analyst

henry@WattTime.org

415.300.7475

