

CASF Application – Solano Valley

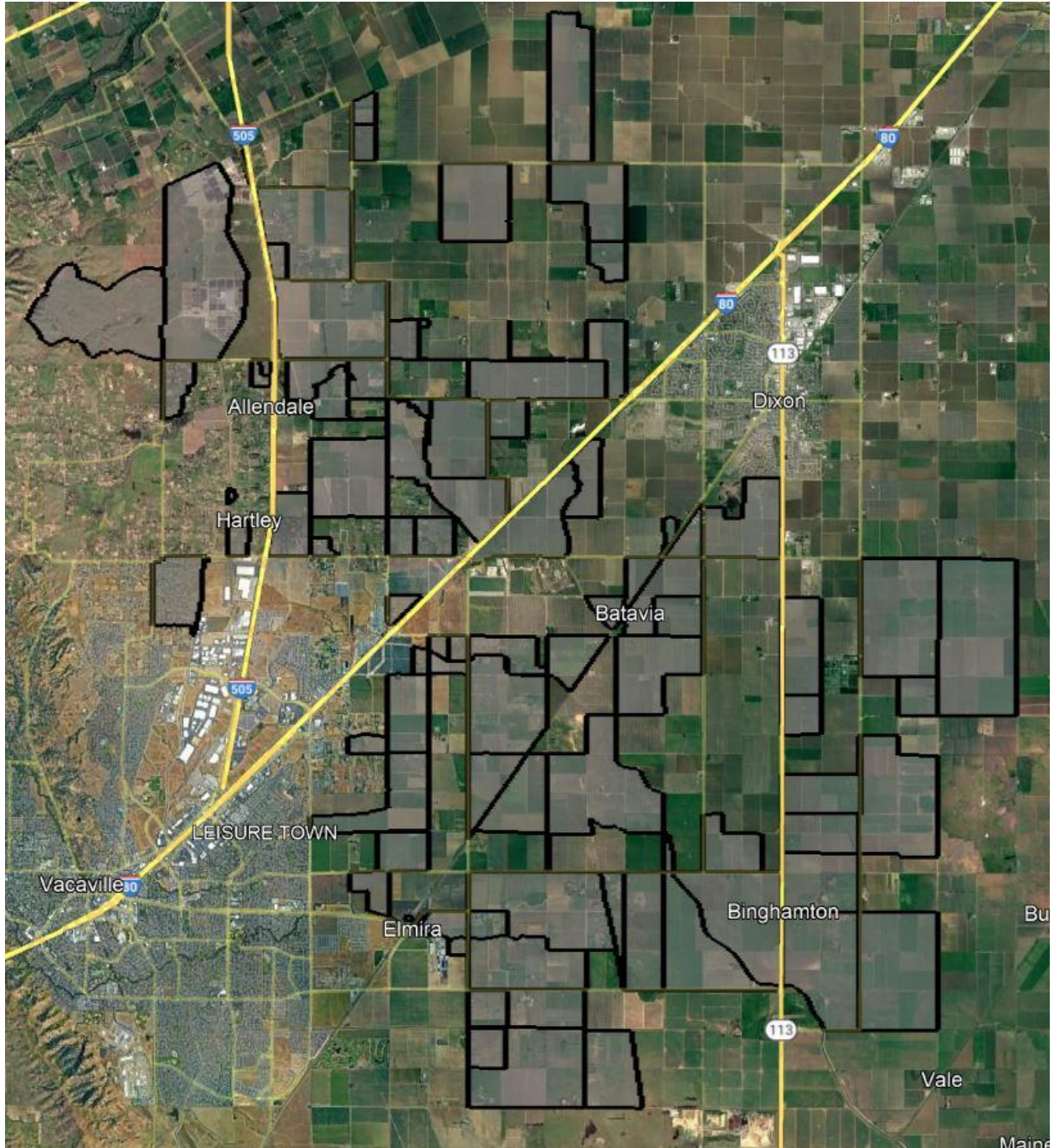
Project Summary

Applicant:	Digital Path, Inc. d/b/a DigitalPath, Inc. #1151
Contact:	Andrew Cardin Senior Vice President of Operations acardin@digitalpath.com
Project Title:	Solano Valley
Location:	Allendale, Hartley, Batavia, Binghamton, Elmira – Solano County
Type:	hybrid last-mile/middle mile
Grant Funds Requested:	\$668,749

Project Area Map



California Interactive Broadband Map – Solano Valley in Solano County



Census Block Boundaries

The Solano Valley CASF Project will provide service to 168 Priority Eligible locations and 153 Eligible locations. 321 total locations.

Census Blocks:

60952533001055	60952533001032	60952533001182	60952533001135
60952529092000	60952533001116	60952533001128	60952533001070
60952529042067	60952529041020	60952533002109	60952533001126
60952533001045	60952533001106	60952534024025	60952533001119
60952533002102	60952529042072	60952533001131	60952533001065
60952533001136	60952529041002	60952529031013	60952533001132
60952533001053	60952529041029	60952533001031	60952533001181
60952529031017	60952533001184	60952529042024	60952533001123
60952529042068	60952529043007	60952529042057	60952533002110
60952533001059	60952529042009	60952533001069	60952529042063
60952533002121	60952529041007	60952534024011	60952533002128
60952529042010	60952529043019	60952533001063	60952533001092
60952529043031	60952529041038	60952529031040	60952533001122
60952533001111	60952529043018	60952533001129	60952533001037
60952533001034	60952529031012	60952529041001	60952533001020
60952529043001	60952533001183	60952529042043	60952534033022
60952533002085	60952529042033	60952529042053	60952533002125
60952533001016	60952529042038	60952533001110	60952533002095
60952533001021	60952533001124	60952533001109	60952529043000
60952529042051	60952533001041	60952533001125	60952529042025
60952533001102	60952533001185	60952529031037	60952529042065
60952529044003	60952529043029	60952529043013	
60952533002124	60952529031054	60952533002100	
60952533001058	60952533001039	60952533001093	

Zip Codes:

95620, 95625, 95687, 95688, 95694

According to the data available through the California Interactive Broadband Map:

38 locations have access equal to or less than 10 Mbps Down / 1 Mbps Up and 283 locations have access at less than 25 Mbps Down / 3 Mbps Up. This project will make speeds available of 100 Mbps downstream and 20 Mbps upstream.

The median household income of the project area is \$89,077.

There are 3 Community Anchor Institutions identified within the project area. None of these locations are listed as eligible or priority eligible.

There is no major infrastructure proposed in this Project.

The major equipment associated with this project is:

- High-capacity access points, generator, licensed microwave link.

Construction will take less than 18 months to complete.

The Solano Valley Project is a hybrid last-mile/middle mile fixed wireless deployment utilizing an existing tower to deliver service to the households covered by this Project.

Once completed, locations covered in this Project will have access to download speeds of 100 Mbps and upload speeds of 20 Mbps. Additional service tiers will be available.

Digital Path, Inc. believes this project to be categorically exempt from CEQA requirements based on the use of existing facilities and local building requirements.

Digital Path, Inc. is not disputing the California Interactive Broadband Map depiction of served status for the locations in this application.

Digital Path, Inc. is not seeking Ministerial Review.

The Middle-Mile component of this project will use licensed microwave links to interconnect the tower sites with an existing fiber connection. The Middle-Mile licensed microwave links are an indispensable part of the project due to the remoteness of the area and lack of available middle-mile connections. DigitalPath, Inc. accepts the open access requirements associated with the middle-mile component of this Project. Once the statewide open-access middle mile network becomes available, it will be connected to.