

CASF Application – North Butte

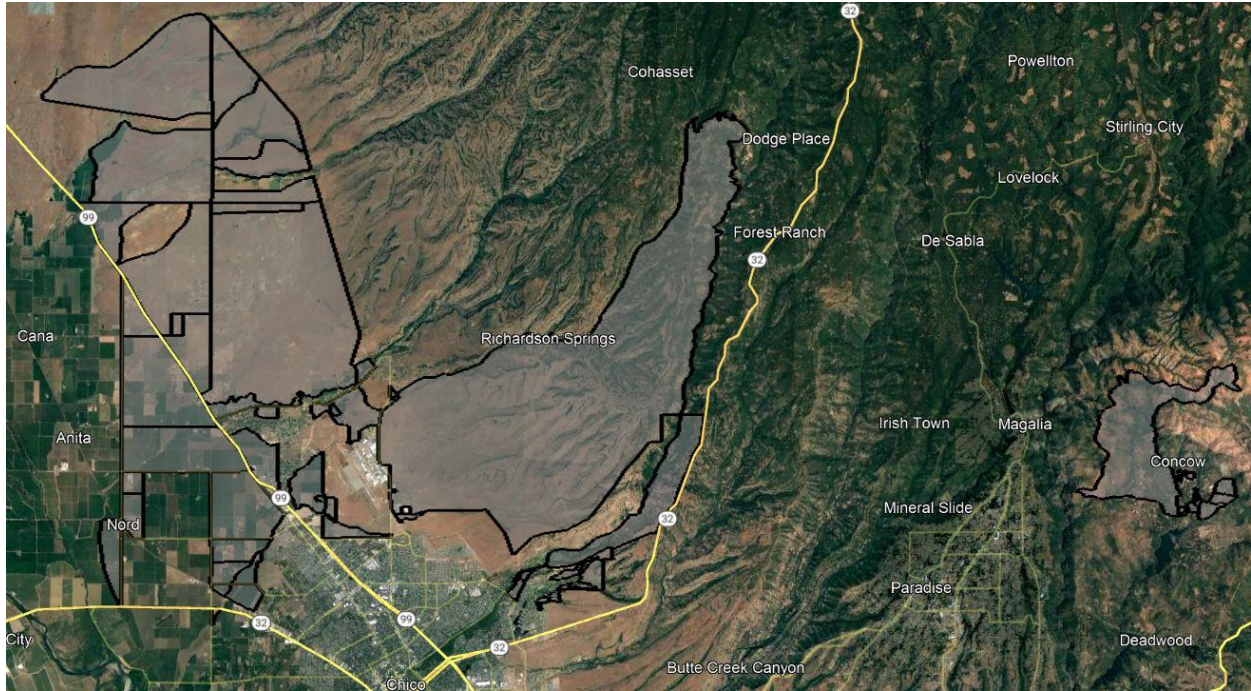
Project Summary

Applicant:	Digital Path, Inc. d/b/a DigitalPath, Inc. #1151
Contact:	Andrew Cardin Senior Vice President of Operations acardin@digitalpath.com
Project Title:	North Butte
Location:	Nord, Chico, Richardson Springs, Concow – Butte County Unincorporated area – Tehama County
Type:	hybrid last-mile/middle mile
Grant Funds Requested:	\$709,134

Project Area Map



California Interactive Broadband Map – North Butte in Butte & Tehama Counties



Census Block Boundaries

The North Butte CASF Project will provide service to 152 Priority Eligible locations and 38 Eligible locations. 190 total locations.

Census Blocks:

60070016023006	61030009003084	60070014004002	60070014004003
60070014001003	60070024011040	60070014004004	60070014003032
60070014003024	60070014001050	60070014001046	60070014003040
60070016023011	60070014003023	60070014001032	61030009003105
60070016023001	60070002012000	60070016021043	61030009003103
60070014003003	60070024011017	60070014003044	61030009003101
60070014001009	60070014003000	60070024011106	60070004011017
60070016021026	60070024011024	60070014004009	60070014001033
60070024011019	60070014003034	60070014001038	60070014003001
60070014004000	60070014003030	60070016021022	60070014003029
60070024011111	60070024011105	60070014003025	61030009003083
60070014001041	60070004011014	60070014001048	61030009003102
60070024011023	60070009011038	60070014001001	
60070024011034	60070016021013	60070024011016	
60070016021024	60070009041000	60070014001047	

Zip Codes:

95928, 95963, 95965, 95973

According to the data available through the California Interactive Broadband Map:

190 locations have access at less than 25 Mbps Down / 3 Mbps Up. This project will make speeds available of 100 Mbps downstream and 20 Mbps upstream.

The median household income of the project area is \$90,806.

There are 5 Community Anchor Institutions identified within the project area. None of these locations are listed as eligible or priority eligible.

There is no major infrastructure proposed in this Project.

The major equipment associated with this project is:

- High-capacity access points, generators, licensed microwave links.

Construction will take less than 18 months to complete.

The North Butte Project is a hybrid last-mile/middle mile fixed wireless deployment utilizing 4 existing towers to deliver service to the households covered by this project.

Once completed, locations covered in this Project will have access to download speeds of 100 Mbps and upload speeds of 20 Mbps. Additional service tiers will be available.

Digital Path, Inc. believes this project to be categorically exempt from CEQA requirements based on the use of existing facilities and local building requirements.

Digital Path, Inc. is not disputing the California Interactive Broadband Map depiction of served status for the locations in this application.

Digital Path, Inc. is not seeking Ministerial Review.

The Middle-Mile component of this project will use licensed microwave links to interconnect the tower sites with an existing fiber connection. The Middle-Mile licensed microwave links are an indispensable part of the project due to the remoteness of the area and lack of available middle-mile connections. DigitalPath, Inc. accepts the open access requirements associated with the middle-mile component of this Project. Once the statewide open-access middle mile network becomes available, it will be connected to.