

## CASF Application – Mohawk

### Project Summary

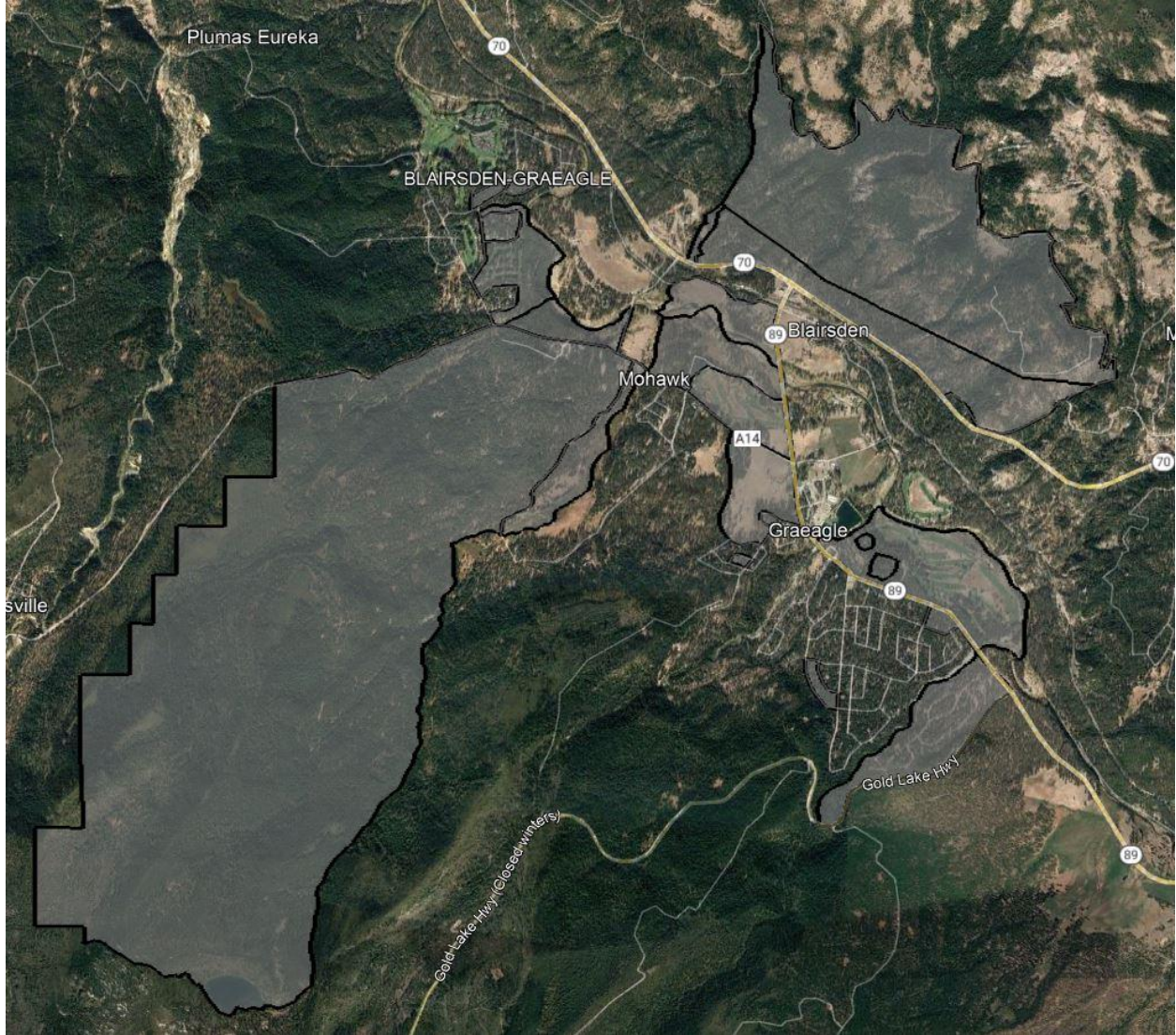
---

<b>Applicant:</b>	Digital Path, Inc. d/b/a DigitalPath, Inc. #1151
<b>Contact:</b>	Andrew Cardin Senior Vice President of Operations <a href="mailto:acardin@digitalpath.com">acardin@digitalpath.com</a>
<b>Project Title:</b>	Mohawk
<b>Location:</b>	Graeagle, Mohawk, Blairsden – Plumas County
<b>Type:</b>	hybrid last-mile/middle mile
<b>Grant Funds Requested:</b>	<b>\$251,327</b>

Project Area Map



California Interactive Broadband Map – Mohawk in Plumas County



Census Block Boundaries

The Mohawk CASF Project will provide service to 86 Priority Eligible locations and 11 Eligible locations. 97 total locations.

**Census Blocks:**

---

60630002011039	60630002012012	60630002012019
60630002012054	60630002012029	60630002012013
60630002012026	60630002011007	60630002012077
60630002012020	60630002011079	60630002012010
60630002012017	60630002012045	60630002011117
60630002011074	60630002012078	60630002011034
60630002011118	60630002012046	
60630002012014	60630002011031	

**Zip Codes:**

---

96103

According to the data available through the California Interactive Broadband Map:

37 locations have access equal to or less than 10 Mbps Down / 1 Mbps Up and 60 locations have access at less than 25 Mbps Down / 3 Mbps Up. This project will make speeds available of 100 Mbps downstream and 20 Mbps upstream.

The median household income of the project area is \$61,961.

There is 1 Community Anchor Institution identified within the project area. This location is not listed as eligible or priority eligible.

There is no major infrastructure proposed in this Project.

The major equipment associated with this project is:

- High-capacity access points, licensed microwave, generator

Construction will take less than 18 months to complete.

The Mohawk Project is a hybrid last-mile/middle mile fixed wireless deployment utilizing an existing tower to deliver service to the households covered by this project.

Once completed, locations covered in this Project will have access to download speeds of 100 Mbps and upload speeds of 20 Mbps. Additional service tiers will be available.

Digital Path, Inc. believes this project to be categorically exempt from CEQA requirements based on the use of existing facilities and local building requirements.

Digital Path, Inc. is not disputing the California Interactive Broadband Map depiction of served status for the locations in this application.

Digital Path, Inc. is not seeking Ministerial Review.

The Middle-Mile component of this project will use licensed microwave links to interconnect the tower sites with an existing fiber connection. The Middle-Mile licensed microwave links are an indispensable part of the project due to the remoteness of the area and lack of available middle-mile connections. DigitalPath, Inc. accepts the open access requirements associated with the middle-mile component of this Project. Once the statewide open-access middle mile network becomes available, it will be connected to.