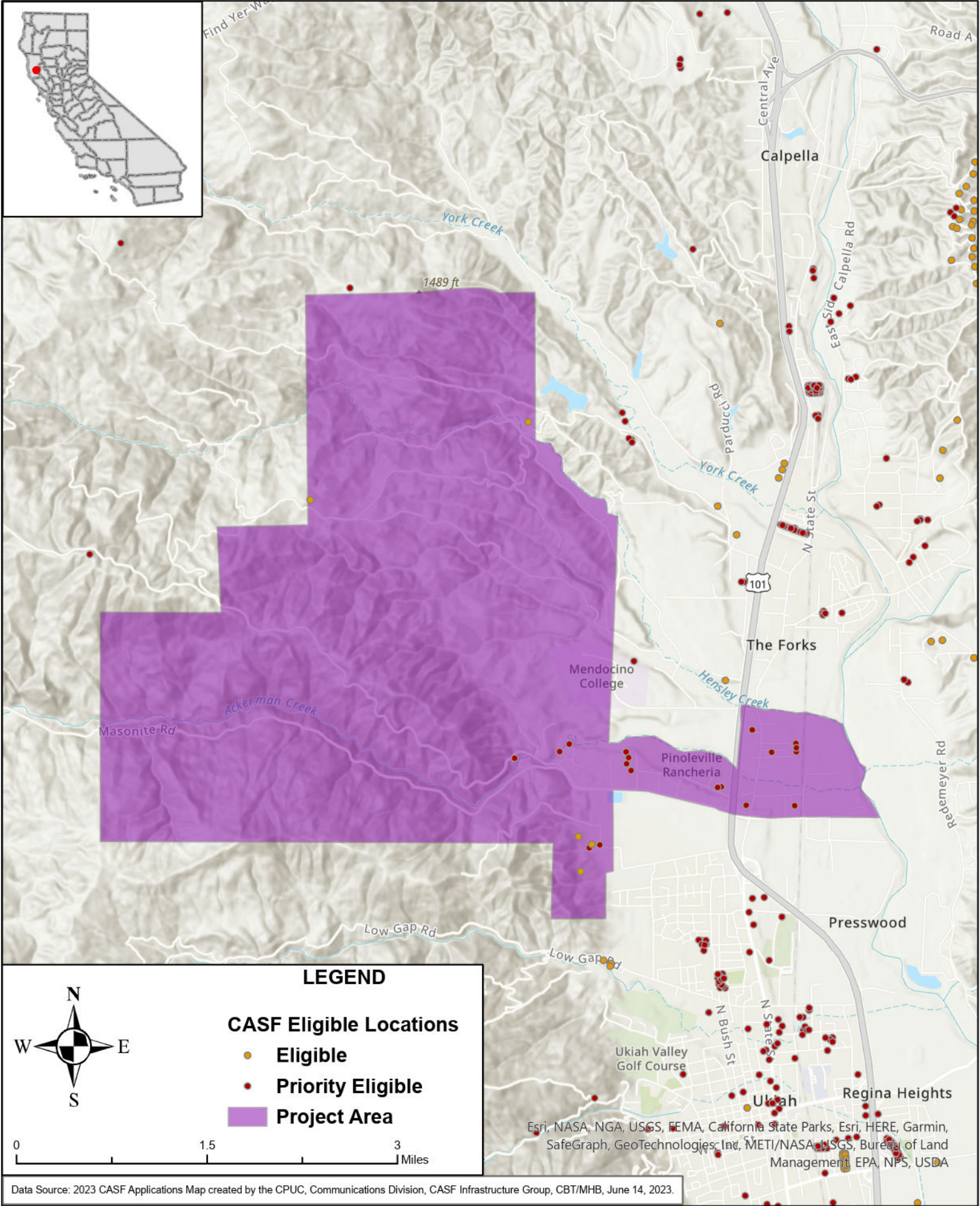




STATE OF CALIFORNIA

AT&T California - Proposed Infrastructure Grant Application

Ukiah - June 1, 2023



LEGEND

CASF Eligible Locations

- Eligible
- Priority Eligible
- Project Area

Scale: 0, 1.5, 3 Miles

Compass: N, S, E, W

Esri, NASA, NGA, USGS, FEMA, California State Parks, Esri, HERE, Garmin, SafeGraph, GeoTechnologies, Inc, METI/NASA, USGS, Bureau of Land Management, EPA, NPS, USDA